

# Using the Mackie Control with Cool Edit Pro 2.1

The Cool Edit Pro 2.1 update adds support for the Mackie Control surface controller device. Please note that you must have installed the 2.1 (or later) update, since this device is not supported in Cool Edit Pro version 2.0. To see which version of Cool Edit Pro you are currently running, open your Cool Edit Pro and go to Help>About Cool Edit Pro. In the window that opens you should see the version number. If you have version 2.0, then it is necessary that you go to the download page of the Syntrillium web site and download the latest update and install it following the instructions provided.

<http://www.syntrillium.com/cep/>

## SETUP

There is no additional software required for Cool Edit Pro to access the Mackie Control unit. This unit needs to be connected to a MIDI In and Out port on your PC, and Cool Edit Pro 2 needs to be set to detect the device on the MIDI port. Most PC sound cards offer an included MIDI hardware In and Out port. If not, there are many options for MIDI port devices available from most any music equipment retailer. For more information on MIDI connection options for the Mackie, please be sure to consult your Mackie documentation. To follow are configuration settings for selecting the Mackie Control and MIDI port within Cool Edit Pro 2. Close Cool Edit Pro and then follow these steps:

**STEP 1** - Connect the MIDI Out from the Mackie Control to the MIDI In port connector for your PC using a standard MIDI 5-pin cable.

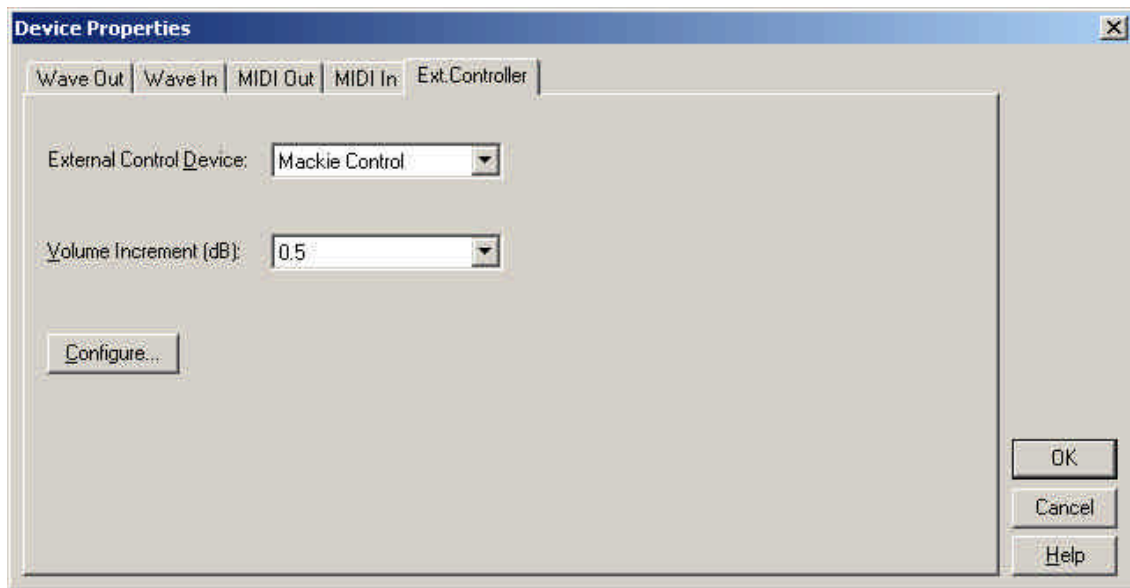
- Connect the Mackie's MIDI In to the MIDI Out port from your PC.



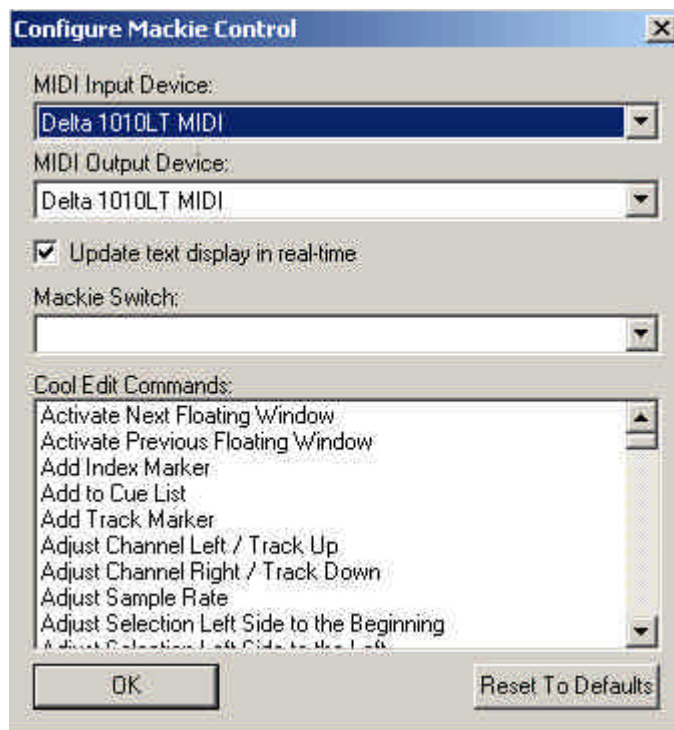
*\*NOTE: It is necessary that you connect the Mackie Control's MIDI In and Out directly to your PC MIDI ports. It is not recommended that you connect other MIDI devices into the MIDI signal chain (a.k.a. "daisy-chaining" the Mackie along with other MIDI hardware devices) to share a MIDI port.*

**STEP 2** - Turn on the Power for the Mackie unit – the Mackie **must be powered on** before launching Cool Edit Pro in order for the software to detect it.

**STEP 3** - Launch Cool Edit Pro and go to the Options > Device Order > Ext. Controllers tab window. Select **Mackie Control** from the drop-down menu field titled “External Control Device”.



**STEP 4** – Click on the “Configure...” button to launch the “Configure Mackie Control” dialog. Here you need to select the MIDI In and Out Devices from the respective lists. You will want to select the ports that you connected your Mackie Control unit into in step 1. Leave the “Mackie Switch” field blank for now – you can use this option later if you wish to customize some of the user-configurable buttons on the Mackie unit. Click “OK” to close this window. If you do not click OK before closing this Configure dialog, your settings will not be retained.



*NOTE: If your MIDI port device does not appear in the MIDI Input Device or MIDI Output Device lists, then Windows has not detected or installed the MIDI Port device correctly and you should refer to the MIDI hardware's documentation for proper installation steps.*

**STEP 5** – Click OK on the Ext Controllers dialog to close it. If you do not click OK before closing this dialog, your settings will not be retained.

**STEP 6** – Go to File > Exit and close Cool Edit Pro. Then, with the Mackie Control device still powered on, re-launch Cool Edit again. This may be necessary to establish the connection to the Mackie Control. Your Mackie Control should now be properly configured and ready to use with Cool Edit Pro. You should not need to repeat these steps since the Mackie Control should retain these settings unless you decide to change them.

The "Update text display in real-time" checkbox is offered in case your MIDI port device has trouble communicating data back to the Mackie LED display. It is recommended that you keep this box checked (the default state). But if you encounter issues where the numerical values on the Mackie LED display are not updating fast enough while moving faders or V-Pots, or if the MIDI port stops responding, then you may try un-checking this box. This reduces the update of the display and may resolve these types of issues.

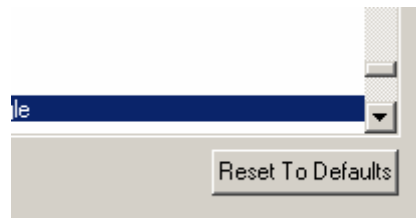
If you wish to plug your Mackie Control into a different MIDI port at a later time, you can then use the "Configure..." button in the Ext. Controller window to access the new MIDI device settings. To manually reset the Mackie to a MIDI port repeat the steps above.

## Customizing the Mackie Switches

Cool Edit Pro already includes a preset “Profile” for the Mackie Control. This is a set of commonly accessed functions mapped to the Mackie unit’s faders, V-pot rotary knobs and push button controls. This profile is automatically loaded once you have the Mackie Control active with Cool Edit Pro. Cool Edit Pro also offers customization for many of the Mackie push-button switches. Within Cool Edit Pro’s Configure dialog you can change the Cool Edit Pro command that is assigned any of the Mackie switches in the menu of the “Mackie Switch” field. Just select the desired Mackie push-button switch from this menu and then click on the “Cool Edit Commands” drop-down menu and select the Cool Edit Pro 2 command from the list that you wish to map to the selected push-button switch. Repeat this step for each Mackie switch you wish to customize, then click OK to exit the Configure dialog and retain your changes.

## Reset to Default Profile

Since Cool Edit Pro allows you to customize the commands of many of the Mackie’s buttons, Cool Edit Pro also offers a “Reset” switch to allow you to set these buttons all back to their original Cool Edit Pro/Mackie Profile settings. *This will discard any custom button settings you may have set up.* The “Reset to Defaults” switch is located in Cool Edit Pro 2’s Options > Device Properties > Ext Controllers > Configure button dialog for the Mackie controller. Click on this reset button when the Mackie is active to reset the unit to default Profile settings.



## The Cool Edit Pro Layout Overlay

The Mackie Control offers interchangeable plastic “Overlay” template sheets to allow you to have software-specific labels for push buttons on the right portion of the controller unit. (Shown on the last page of this document.) You may have received a Cool Edit Pro Overlay in the box with your Mackie Control unit. If not, then please contact Mackie or Mackie hardware dealer to receive a Cool Edit Pro Overlay and consult the Mackie documentation for the instructions on affixing the Overlay sheet. The Cool Edit Pro Overlay offers its own descriptive text labels for the many buttons on the right side of the Mackie surface. In this document we will refer to button names as those provided on the Cool Edit Pro overlay.

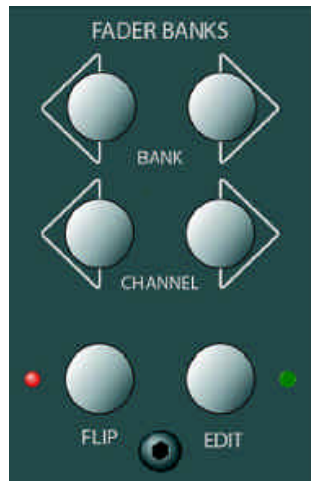
## The Cool Edit Pro 2 Mackie Profile

### Commands List

Cool Edit Pro already includes a preset “Profile” for the Mackie Control. This is a set of commonly accessed functions mapped to the Mackie unit’s faders, V-pot rotary knobs and push button controls. To follow are descriptions of these Profile commands. You can further customize several Mackie Switches in the Ext. Controllers dialog – refer to the previous “Customizing the Mackie Switches” section for details.

### Assigning Channel Strips to Cool Edit Pro Tracks

To set up the Mackie Control’s channel faders and switches for your Cool Edit Pro session, it is first necessary to learn how to assign the Mackie’s 8 channel strips to the desired Cool Edit Pro tracks. This is achieved using the 6 buttons in the FADER BANKS section.



**FADER BANKS buttons**

**BANK < >** = these left and right arrow buttons are used to assign the Mackie channel faders to the previous/next set of 8 Cool Edit Pro tracks. For example, upon starting a Cool Edit Pro new session, the 8 Mackie channel strips are assigned to control Cool Edit Pro tracks 1 – 8 respectively. However, if you click on the BANK right arrow button once, the Mackie channel strips will then control track 9 – 16, and you can assign the channel strips to successive banks all the way up to tracks 121 - 128.

**CHANNEL < >** = these left and right arrow buttons re-set the Bank set to include a different set of tracks. For example, by default the 8 Mackie channel strips are assigned to banks in the order of tracks 1 – 8, 9 – 16, 17 – 24, etc. By using these Channel < > buttons it is possible to reconfigure the Bank sets to tracks 2 – 9, 10 – 17, 18 – 24, etc. Hitting one of the Channel arrow buttons should ascend/descend the bank groups by one track per click.

The **FLIP** and **EDIT** buttons located just above the Master fader offer more control over channel strips:

**FLIP** button = this button “resets” the channel strip assignment to Cool Edit Pro tracks 1 – 8, so that you can easily reset the Mackie back to this first set of tracks.

**EDIT** button = this button instantly sets the 8 channel strips to Cool Edit Pro tracks 121 – 128.

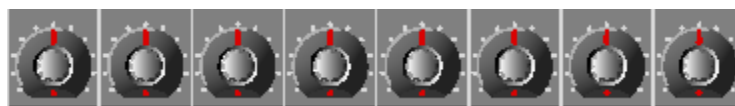
### Channel Strip Controls

Each of the Mackie’s 8 channel strips has the following common buttons. These are only active in Cool Edit Pro’s Multitrack View.

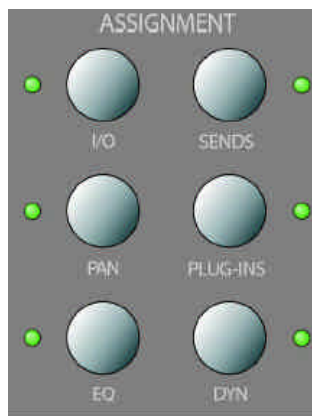
By default, the Mackie Control will initialize and be set in the MIX mode, where the LCD display at the top of the unit shows the currently selected track’s number, text title and its Track Volume setting. The bottom row of this display indicates the current track number assignment for each Mackie channel strip. For example, once Cool Edit Pro is launched and set to the Multitrack View, the Mackie LCD display would look similar to this:

<b>009 Track 9</b>						<b>Vol -3.4dB</b>	
<b>9</b>	<b>10</b>	<b>11</b>	<b>12</b>	<b>13</b>	<b>14</b>	<b>15</b>	<b>16</b>

**V-POTS & ASSIGNMENT buttons**



**V-POTS**



### ASSIGNMENT Buttons

- The rotary knob at the top of each channel strip is referred to as a V-Pot. Each V-Pot is a multi-function control knob and has different uses for Cool Edit Pro depending on the current “mode” assignment.
- The V-Pot functions are governed by the buttons to the right in the ASSIGNMENT section. Cool Edit Pro allows you to switch into two optional modes – PAN or EQ – by selecting one of these two buttons. The current mode selection is indicated by the LED light next to the respective ASSIGNMENT button. De-selecting either the PAN or EQ assignment buttons always returns you to the default MIX mode.
- Each V-Pot knob also includes a switch (press down on the rotary knob itself). This knob switch can also be assigned as listed below...

**PAN** Assignment button – this button places the V-Pots in PAN mode. When engaged, this button’s LED illuminates and all V-Pots will pan the currently selected track output left or right. While in Pan mode you will also see that the main Mackie display (above the channel strips) shows you your currently selected track’s Pan settings. To exit Pan mode simply press the PAN assignment button again so that its LED light is no longer lit. This will return the unit to MIX mode where the LCD display also returns to showing the track volume settings. (See the Display section in this document for more details). While in PAN mode, the V-Pot knob push switch has no function.

**EQ** Assignment button – this button allows you to toggle in and out of EQ mode, which allows the V-Pots to control Cool Edit Pro’s dedicated Track EQ for the selected track. The EQ button’s LED illuminates when EQ mode is engaged. Pressing the EQ button again disengages the EQ mode and returns the unit to MIX mode. When EQ mode is engaged, the selected track’s V-Pot knob push switch cycles through the Hi, Med and Low EQ Gain value parameters. Turning the V-Pot should then adjust the active parameter up/down. When in EQ mode, the LCD display will show the Track EQ settings as you make them for the selected track. (See the Display section in this document for more details).

*Note - The other 4 ASSIGNMENT buttons have no related function within Cool Edit Pro.*

**Channel Strip Buttons** – these buttons are common to each channel strip and will act upon the currently assigned track.

### REC/RDY Button



- Toggles Cool Edit Pro's Track Record Arm button. The red light on this button illuminates when the track is armed for recording.

### SOLO Button



- Toggles Cool Edit Pro's Track Solo function. This button illuminates when Solo is active.

### MUTE Button



- Toggles Cool Edit Pro's Track Mute function. This button illuminates when Mute is active.

### SELECT Button

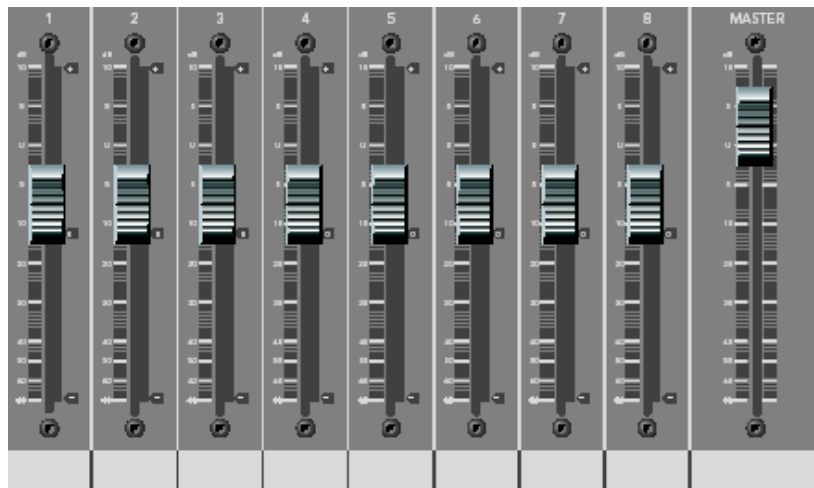


- Shifts the focus and selects this track. The button will illuminate to indicate which channel is currently selected.
- It is only possible to select one channel/track at a time.



- Any channel becomes selected by either pressing this SELECT button, or also by pressing the channel's REC/RDY, SOLO, or MUTE buttons. You will see the selected track in Cool Edit Pro is then shaded a lighter color for both the Multitrack Track itself, and in the Cool Edit Pro Mixer panel.
- Once you push the Mackie Select button on any channel strip, this channel stays selected until another channel is selected. Therefore, if you select a channel and then press the BANK switch to assign the 8 Channel Faders to a different set of Cool Edit Pro tracks, you should note that the currently Selected channel is still the one in the previous Bank.
- The Mackie channel faders are also touch-sensitive, therefore, simply touching any fader knob will allow you to still access the assigned Cool Edit Pro track volume, even though it does not 'select' the track.
- The Signal LED light in each channel strip is not utilized by Cool Edit Pro

## Channel Faders



- The 8 channel faders and 1 master fader allow control of Cool Edit Pro's track volumes and master volume. The channel faders default as assigned to track 1 – 8 on opening a new session. The 8 channel faders can be assigned to and switched between different sets of 8 tracks easily by using the **FADER BANKS** switches located above the Master Fader.
- The channel faders on the Mackie are motorized and they will update to reflect Cool Edit Pro's Multitrack Mixer's fader settings. It is not necessary to "Null" the Mackie faders – when you switch to a different Bank these motorized faders will move to reflect the new 8 Cool Edit Pro track volume settings.
- Likewise, moving any Cool Edit Pro Multitrack Mixer fader with the mouse also moves the Mackie motorized fader that is assigned to this track. Again, you will

only be able to see the Mackie channel fader move if the Mackie Bank is currently set to one of the 8 Cool Edit Pro tracks you happen to be accessing with the mouse.

*NOTE: The following sections of buttons can be covered with the optional plastic Overlay. Once installed, the Cool Edit Pro overlay provides the following text labels.*

**UNDO** = At the top left of this section is the Undo button. This ‘undoes’ the last performed command.

**REDO** = The button re-applies the last command that was ‘undone’ using the Undo command

---

## **EDIT VIEW COMMANDS**

The 8 buttons in this row currently each have an assigned Cool Edit Pro Profile function by default and this list is as follows. These 8 functions are ones that are used in the Cool Edit Pro Edit View only. These 8 buttons are also “User Configurable” – that is, you can re-map these buttons to any Cool Edit Pro command within the Ext Controllers-Configure button dialog. Please refer to the preceding “Customizing the Mackie Switches” section for details.

**COPY** = Copy current selection

**CUT** = Cut current selection

**PASTE** = Paste at current cursor location

**TRIM** = Deletes all but the selected area of the current file

**FREQ** = Toggles the Frequency Analysis window open/closed

**PHASE** = Toggles the Phase Analysis window open/closed

**SPECTRAL** = Toggles the Cool Edit Pro Edit View display between Waveform/Spectral

**INSERT** = Inserts the current file or selection from Edit View into the next available track in the Multitrack.

## **GLOBAL COMMANDS BUTTONS**

The 8 buttons in this row currently each have an assigned Cool Edit Pro Profile function by default and this list is as follows. These 8 functions are ones that function in both Cool Edit Pro’s Edit and Multitrack Views. These 8 buttons are also “User Configurable” – that is, you can re-map these buttons to any Cool Edit Pro command within the Ext Controllers-Configure button dialog. Please refer to the preceding “Customizing the Mackie Switches” section for details.

**VIEW** = Toggles the Cool Edit Pro display between Edit and Multitrack Views

**MON.REC.** = Toggles Cool Edit Pro into ‘Record Monitor’ mode to allow you to check your input levels

**CUE** = Adds current cursor location or selection to Cue List

**CUE LIST** = Toggles the Cue List open/closed

**SEL. ALL** = Selects all data in the current view – in Edit View this highlights the entire length of the file. In Multitrack this selects all blocks.

**ZOOM FULL** = Zooms the current view out vertically and horizontally to show the entire length of the file or session

**CLOSE** = Closes the current File or Session

**SAVE** = Saves the current File or Session

### **SHOW/HIDE buttons**

These 4 buttons allow you to show or hide the respective dockable windows. These four button assignments are:

**MIXER** = Show/Hide the Multitrack Mixer window

**SES. PROP.** = Show/Hide the Session Properties window

**EQ** = Show/Hide the currently selected track's EQ window. This is handy to toggle the EQ window open or closed when also using the Mackie V-Pots in EQ mode to access the Track EQ parameters.

**ORGANIZER** = show/Hide the File Organizer window in either Edit or Multitrack View.

### **MULTITRACK FUNCTIONS Buttons**

The 10 buttons in this section are assigned to specific Multitrack View Cool Edit Pro actions as described below.

**NEXT** = Selects the next block in the currently selected track so that a function can be applied to the block (such as Nudge, Split, Remove, etc.)

**SPLIT** Splits the currently selected block into two blocks at the cursor location

**TRIGGER** = Toggles Cool Edit Pro's MIDI Trigger option on/off

**SMPTE S** = Toggles the SMPTE Slave option on/off

**SMPTE M** = Toggles the SMPTE Master option on/off

**REMOVE** = Removes the currently selected block from the session

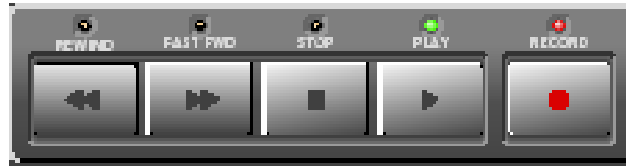
**METRANOME** = Toggles the Metronome on/off

**< CURSOR** = Resets the cursor back to the 00:00 time position.

**< NUDGE** = Nudges the currently selected block Left

**NUDGE >** = Nudges the currently selected block Right

## TRANSPORT CONTROLS




The ‘tape deck style’ transport buttons, as expected, will shuttle Cool Edit Pro’s REWIND, FAST FORWARD, STOP, PLAY, & RECORD functions. The LED for each button will illuminate when the action is engaged. These transport buttons function in both Cool Edit Pro’s Edit and Multitrack Views as well. There are also a few other commands available using these Transport buttons:

- Double-tap the << REW button to place the cursor and view at the start of the Cool Edit Pro session (MT), file (EV) or to next Cue marker to the left (MT and EV).
- Double-tap the >> FF button to place the cursor and view to the end of the session (MT), file (EV) or next right Cue marker (MT and EV)
- Once you are in playback mode, PAUSE is available if you press the PLAY > button once during playback (MT and EV). To resume playback, press the PLAY > button again.
- Once you are in record mode, PAUSE is available if you press the RECORD button once during playback (MT and EV). To resume record, press the RECORD again.

## TRANSPORT FUNCTIONS

In addition, the row of push buttons just above the Transport can also be used to modify the behavior of the Transport. The left three buttons offer the 3 Cool Edit Pro transport Play modes and only one can be active at a time. Therefore you will note that as you select any one of these 3 buttons, it will automatically de-select the previously active play mode. The green LED glows to indicate the active button. These Play mode selectors make the Mackie Transport Play button duplicate the Cool Edit Pro play button mode. This means that you can still also right click your mouse on the Cool Edit Pro transport buttons to select exactly which play behavior you want for each of these respective play modes, and the Mackie transport Play button will simply trigger it.

**PLAY ►** = Duplicates the behavior of the Cool Edit Pro Transport standard Play button (the right arrow Play button).

**PLAY**  = Duplicates the behavior for the Cool Edit Pro “Play to End” transport Play button.

**PLAY**  = Duplicates the Cool Edit Pro Transport “Loop Play” button.

**PUNCH IN** = When engaged places Cool Edit Pro’s Multitrack into Punch In recording mode. You must first select a waveblock in a track and highlight the desired selection of the block to initiate Punch In mode. To disengage punch In mode, simply disarm the REC button for the Punch In enabled track(s).

**ANCHOR L** = Anchors the cursor during playback. Press this while Cool Edit Pro is playing to change the cursor location to the current time position.

**ANCHOR R** = Anchors a 2<sup>nd</sup>, Right cursor position during playback. Press this while Cool Edit Pro is playing to create a highlighted selection from the existing anchored cursor position to the current time position

**DISABLE** = disables recording altogether in Cool Edit Pro so that pressing the Record transport button does nothing. The red LED will illuminate to indicate when record is disabled.

## JOG WHEEL



The Jog Wheel shuttles the cursor left or right in time across the waveform in Edit View, or the Session display in Multitrack View. Since Cool Edit starts playback from the cursor position, this is a handy way to move your playback start position easily.

## ARROW - ZOOM Buttons



The 4 Arrow buttons located below the Transport controls offer two “modes” of operation, which are accessed by the ZOOM button in the middle of the keys. With the ZOOM button de-activated (the red LED not illuminated) the four arrow buttons function as follows:

**Left Arrow** = Adjust Selection Left Side to Left (Edit View and Multitrack View). This allows you to extend a highlighted selection by moving the left edge further to the left. It also allows a selection to be created from the cursor (if no selection is currently defined), extending to the left.

**Right Arrow** = Adjust Selection Right Side to Right (Edit View and Multitrack View). This allows you to extend a highlighted selection by moving the right edge further to the right. It also allows a selection to be created from the cursor (if no selection is currently defined), extending to the right.

**Up Arrow** = Selects the next track up (in the Multitrack View) – and Selects Left Channel only of the current file (in the Edit View)

**Down Arrow** = Selects the next track down (in the Multitrack View) - and Selects the Right Channel only of the current file (in the Edit View)

When the ZOOM button is active (the LED illuminated), these arrow buttons then function as follows (in both Edit and Multitrack Views):

**Left Arrow** = Zooms out horizontally

**Right Arrow** = Zooms in horizontally to the current playback cursor position or selection

**Up Arrow** = Zooms in vertically

**Down Arrow** = Zooms out vertically

*Note: The SCRUB button in this section has no current Cool Edit Pro assignment.*

## DISPLAY – Left LCD Display

This display above the Channel Controls provides information related to the selected track's Volume, Pan or EQ settings, depending upon the current "Mode" that is selected. The bottom row of the display always shows the 8 track numbers for the current bank set, which allows you to easily see what Cool Edit Pro track the fader below is currently assigned to. Note that if you have typed in a name for your track that top row will display your track name text in place of the default "Track xx".

The default Mode is "Mix" mode, and alternatively you can select the Pan or EQ assignment buttons to switch to Pan or EQ mode (refer to the V-POTS & ASSIGNMENT buttons section in this document for further details regarding these modes). In Mix mode, the top row of this display will show the Volume setting for the currently selected track. To follow is an example where Track 9 is the selected track and its volume is set to -3.4 dB:

<b>009 Track 9</b>						<b>Vol -3.4dB</b>	
<b>9</b>	<b>10</b>	<b>11</b>	<b>12</b>	<b>13</b>	<b>14</b>	<b>15</b>	<b>16</b>

To follow is an example of the LCD display when in Pan mode, where Track 9 is selected and its Pan value is set right 14 %:

<b>009 Track 9</b>						<b>Pan Right 14</b>	
<b>9</b>	<b>10</b>	<b>11</b>	<b>12</b>	<b>13</b>	<b>14</b>	<b>15</b>	<b>16</b>

To follow is an example of the LCD display when in EQ mode, where track 9 is selected, the Track EQ Mid Gain parameter is selected, and its value is set to a +1.3 dB boost.

<b>009 Track 9</b>						<b>EQ Gain Mid +1.3dB</b>	
<b>9</b>	<b>10</b>	<b>11</b>	<b>12</b>	<b>13</b>	<b>14</b>	<b>15</b>	<b>16</b>

## ASSIGNMENT LED display

The unit offers a 2 character LED display already titled ASSIGNMENT. This display has no related function for Cool Edit Pro 2 and therefore will not display any characters.

## TIME POSITION LED DISPLAY



The red LED numerical display will reflect the Cool Edit Pro Time position. Note that it will also reflect the current Cool Edit Pro Time Ruler formatting for any of Cool Edit Pro's options – HMS, BPM, SMPTE fps, Samples, or Custom. This display format will update whenever you select any of the Time Ruler options within Cool Edit Pro.

One of the two indicator LED lights at the left of the numerical characters in this display will show when the format is SMPTE or BPM (“Beats”). If the current Ruler Display format is HMS or Samples, then no indicator light will be illuminated.



**Rude Solo Light** = This indicator light is not utilized by Cool Edit Pro and will remain unlit.

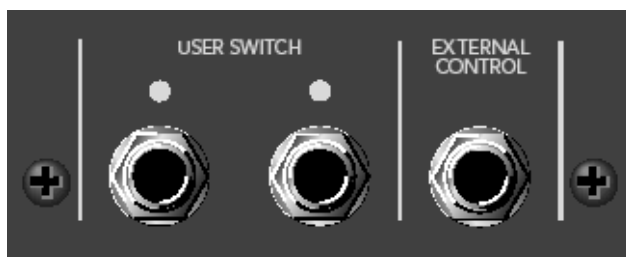
### **USER SWITCHES A and B (on the Mackie back panel)**

These two ¼ inch jacks are intended for plugging in a momentary footswitch to trigger the assigned software functions. (The remote footswitch units are not supplied with the Mackie Control, but can typically be purchased from any musical instrument retailer.)

In Cool Edit Pro these User Switches are “User Configurable” – that is, you can re-map these to any Cool Edit Pro command within the Ext Controllers-Configure button dialog. Please refer to the preceding “Customizing the Mackie Switches” section for details. The default functions assignment in Cool Edit Pro for these two jack switches are as follows:

USER SWITCH A = Toggles between Record and Stop (in both EV and MT).

USER SWITCH B = Toggles between Play and Stop (in both EV and MT).





## **MACKIE EXTENDER UNIT**

In addition to the Mackie Control unit, Mackie also offers the “Extender” unit, which is designed to be used in tandem with the main Mackie Control unit, thus adding controller support for additional channel control. Cool Edit Pro does not currently support the use of an Extender device simultaneously with the main Mackie Control device on the same system.

For additional support regarding the Mackie Control, please visit:

[http://www.mackie.com/record/mackiecontrol/mackiecontrol\\_support.html](http://www.mackie.com/record/mackiecontrol/mackiecontrol_support.html)

or contact Mackie Designs Tech Support toll-free at 800.258.6883  
(outside the US and Canada call +1 425.487.4333)



--END--